

Product data sheet

Specifications

SQUARE D



Manual Starter, fractional horsepower, duplex, 16A, 1 pole, 1 HP at 277VAC, toggle and selector, green indicator, NEMA 1

2510FG71PG

Product availability: Non-Stock - Not normally stocked in distribution facility

Price*: 277.34 USD

Main

Product	Duplex Unit Manual Starter
Type	F
Overload Relay Type	Melting alloy

Complementary

Current Rating	16 A
Cable entry	0.5" and 0.75" knock-outs (top and bottom)
Horsepower Rating	1 hp 115 V AC 1 hp 230 V AC 1 hp 277 V AC
Voltage Rating	277 V AC
Number of Poles	1P
Control Unit	Toggle switch
Number of Phases	1 phase
Pilot Light	Green indicator
Reset	Manual
Motor starter type	Non reversing
Electrical Connection	Screw clamp terminals
Wire Gauge	AWG 14...AWG 12 copper
Height	4.25 in (107.95 mm)
Width	2.44 in (61.98 mm)
Depth	2.88 in (73.15 mm)

Environment

Product Certifications	UL listed file E42243 CCN NLRV CSA LR25490 class 3211 05
NEMA Enclosure Rating	NEMA 1 Plastic standard size

Ordering and shipping details

Category	US10CP121101
Discount Schedule	0CP1

Price is "List Price" and may be subject to a trade discount – check with your local distributor or retailer for actual price.

GTIN	3606486289556
Returnability	No
Country of origin	MX

Packing Units

Unit Type of Package 1	PCE
Number of Units in Package 1	1
Package 1 Height	5.50 in (13.97 cm)
Package 1 Width	4.50 in (11.43 cm)
Package 1 Length	7.00 in (17.78 cm)
Package 1 Weight	27.904 oz (791.065 g)

Contractual warranty

Warranty	18 months
-----------------	-----------

Sustainability

Green Premium™ label is Schneider Electric's commitment to delivering products with best-in-class environmental performance. Green Premium promises compliance with the latest regulations, transparency on environmental impacts, as well as circular and low-CO₂ products.

Guide to assessing product sustainability is a white paper that clarifies global eco-label standards and how to interpret environmental declarations.

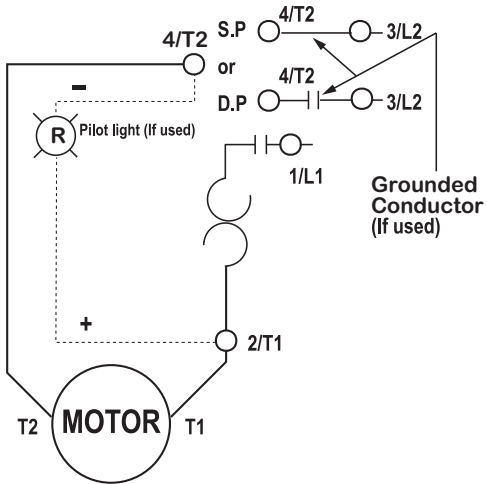
[Learn more about Green Premium >](#)

[How we assess product sustainability >](#)

Reach Regulation	REACH Declaration
Eu Rohs Directive	Not compliant
China Rohs Regulation	China RoHS declaration Product out of China RoHS scope. Substance declaration for your information.
California Proposition 65	WARNING: This product can expose you to chemicals including: Lead and lead compounds, which is known to the State of California to cause cancer and birth defects or other reproductive harm. For more information go to www.P65Warnings.ca.gov

Technical Illustration

Wiring diagram



REFER TO INSTRUCTION SHEET AND
TECHNICAL DOCUMENTATION FOR COMPLETE INFORMATION